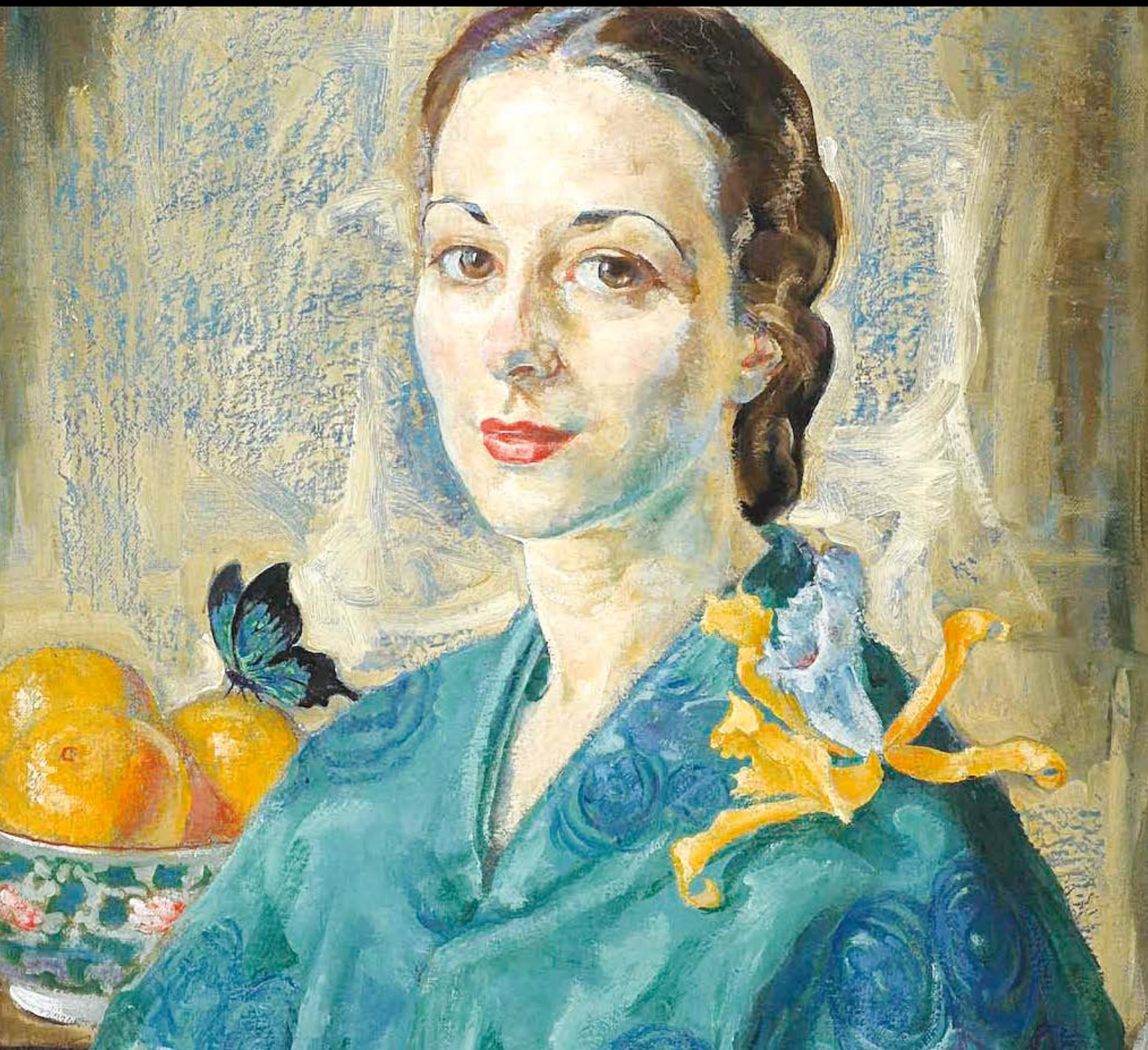


YOUR BEQUEST



YOU CAN MAKE A DIFFERENCE THROUGH A BEQUEST OR GIFT IN YOUR WILL

MESSAGE FROM **OUR CHAIR**

The New England Regional Art Museum (NERAM) has always relied upon the generosity of our community to ensure that it thrives. NERAM's independence has been made possible by the donation of time and effort by our volunteers, Friends and Board Members as well as the financial support provided by our benefactors and supporters. People often think that 'philanthropists' are other people, but the reality is that anyone can be a philanthropist by making a donation or a bequest to the NERAM Foundation.

By making a bequest to NERAM you are making a commitment towards our community and supporting the long term success of an organization which you feel passionately about. The ongoing funding provided by the NERAM Foundation is the most successful strategy for NERAM's future and will provide certainty for the art museum we all love. With your support it is our aim to develop the capital funds of the NERAM Foundation up to \$10 million within the next ten years to ensure the long term financial viability and support that NERAM will need to be sustainable into the future.

When you are planning your estate we ask you to make a commitment to support NERAM through making a gift in your will that will help the art museum and the community of New England.

With thanks,

Andrew Murray

Chair, New England Regional Art Museum Ltd

Peter Lloyd

Chair, NERAM Foundation



Fred Leist, *The Art Students* 1934, Gift of Howard Hinton 1934

CREATE YOUR LEGACY

MESSAGE FROM **OUR DIRECTOR**

The New England Regional Art Museum was founded around one of the most significant acts of philanthropy in Australian art history. The extraordinary generosity of Howard Hinton towards the Armidale Teacher's College created a lasting legacy and tribute to him as well as a wonderful art collection for our community to experience and enjoy. The founding of NERAM in the 1980s also involved the support of many people across the New England region whose vision made the museum possible, many of whom continue to support NERAM today.

The future of NERAM will depend upon the passion and commitment of people like you who make a gift or bequest in their Will. Many of the great art museums of the world have been built upon the foresight of people who have made significant donations, bequests or endowments to ensure that the artworks, programs and buildings that they love are looked after properly well into the future.

Anyone can make a bequest that makes a lasting difference and leaves a long term legacy for NERAM.

Robert Heather
Art Museum Director,
New England Regional Art Museum



Mosman's Bay by Tom Roberts ready for delivery to National Gallery of Australia retrospective 2015

YOUR **GENEROSITY** IS NERAM'S **FUTURE**



Wimble's Wayzgoose at Museum of Printing 2017



2017 School Holiday program
– Smartphone photography workshop

Make a donation to NERAM Foundation

NERAM Foundation is the preferred recipient of funds donated or bequeathed to support the New England Regional Art Museum. Donations made to the Foundation at any time are tax-deductible as it is a Deductible Gift Recipient and registered Charity. Please note that a bequest is not tax deductible by the estate of the deceased.

The NERAM Foundation's purpose is to secure the long term future of NERAM's operations and programs through fundraising and investment of donated funds. The return on these investments enable the NERAM Foundation to make an annual contribution towards NERAM's running costs such as staffing, insurance, building maintenance and programs. As the Foundation's capital reserves grow it will provide an increasing annual distribution of funds towards NERAM's operational costs.

Types of bequests

A Will is the key legal document that ensures after your death that your wishes are protected and implemented. A bequest is an instruction given within a Will that reserves part or all of an estate for a specific beneficiary. Gifts or bequests can be made to the New England Regional Art Museum or to the NERAM Foundation, or you may want to discuss a specific plan or project that you wish to support through your donation.

A tailored bequest to the NERAM Foundation can be discussed. You may want to see the funds directed towards a specific area such as the Howard Hinton Trust, to support existing programs such as our award-winning Adopt-an-Artwork program for conserving the collection, acquisitions of artworks, or to initiate new special activities (eg artist residencies and bursaries, research fellowships, guest lectures) or programs (eg for schools, young people, community groups etc).



How to leave a lasting gift to NERAM:

Every donation to NERAM makes a difference and we are extremely grateful for all gifts whether large or small and we will work with you to ensure that your bequest intentions are fully realised.

- **Cash, insurance policies or shares** – A bequest of cash or transfer of shares can be freely made to the NERAM Foundation who will manage



Creative Ageing Morning Tea 2017



Regional Australia Bank
Kids Art Cart

their investment to support ongoing NERAM's operational costs. If you want to assist with the acquisition of works of art, to support a specific program (eg Adopt-an-Artwork) or for capital works through our Building Improvement Program then please discuss these plans with NERAM previously to ensure that purpose can be truly realised. Funds donated directly to the New England Regional Art Museum Ltd could also be used as a one-off donation to assist with a specific project or program.

- **Artworks** – The process of acquisition of artworks into the NERAM collections is specified by the NERAM Collections Policy and not all artworks can be accepted due to limited collection storage space, conservation resources available and NERAM's collecting priorities. It is important to discuss a possible gift of artworks as early as possible to ensure that the works on offer meet the specifications of the Collections Policy and will be accepted by NERAM into the collection. Priority is given to artworks that include funding to provide for the work's long-term care and conservation.
- **Property or assets** – You can bequeath a real estate property or other assets to NERAM as a gift in your will. Discussion with the Director of the Museum regarding a bequest which includes property or assets is important during the drafting of your will. It is at the discretion of the Board of NERAM whether to accept or reject a donation of property based on the terms of the will. The Board is guided by the Bequest Policy which includes an

assessment of whether the property should be retained without detriment to the operating costs of the Museum. The Policy considers whether the property would suit NERAM's artistic goals (eg artist-in-residence studio), financial objectives (eg rental income) or its historical/cultural value (eg home of significant artist). The Board would assess the property's services, maintenance and general operational costs. Priority is given to properties or assets that include funding to provide for their long-term care.

- **Cultural Gifts Program** – you might wish to consider a gift under the Commonwealth Government's Cultural Gifts Program whilst you are still living – rather than a bequest. This program offers tax incentives to encourage people to donate cultural items to public art galleries, museums, libraries archives in Australia. This can be considered with both your solicitor and your tax professional.
- **Deed of Gift** – you can also make a commitment to NERAM through leaving a Deed of Gift with your solicitor allocating a set amount of money to be provided in your estate to be given to NERAM or the NERAM Foundation.

Planning your bequest

We ask you to plan ahead and help NERAM's future as a financially sustainable organisation



Geoff La Gerche, *Vegemite* 1976-77,
Gift of Chandler Coventry 1979



Esther Patterson, *The Yellow Gloves (Portrait of Betty Paterson)* 1938,
Gift of Howard Hinton 1939

that provides our community with access to a diversity of artistic and cultural experiences.

We recommend that you discuss your plans with your lawyer, accountant or trustee, as well as inform family members of your intentions. If you are considering leaving a bequest to NERAM we suggest that you contact us to ensure your wishes can be fulfilled within our organisation's policies. All discussions concerning bequests will be treated with the utmost discretion and in strict confidence.

If you already have a Will then you can develop an addition to the Will in the form of a Codicil which alters its terms and makes allowances for your gift to NERAM. If you have not yet made a Will we encourage you to consider a bequest to NERAM or the NERAM Foundation.

We recommend that you notify us of your bequest by writing to NERAM through your solicitor and it is particularly useful to include a copy of the relevant extract from your Will or Deed of Trust. Upon receipt of a bequest notification, you will be invited to become a member of the Howard Hinton Circle in recognition of your intended gift.

Wording and intent

In order to make your intent clear to all concerned it is important to use the correct wording in your Will or Deed of Trust.

Here are some examples:

- I give to The NERAM Foundation the sum of (specify amount of money or proportion of the estate or the nature of asset or gift) to support the activities of the New England Regional Art Museum. The receipt issued in the name of NERAM Foundation is an absolute discharge to my executors.
- I give to the New England Regional Art Museum the sum of \$..... (specify amount of money or proportion of the estate or the nature of asset or gift) and I express the wish that this bequest is applied for the purposes of (describe eg: acquisition of artworks, conservation treatment of the Howard Hinton Collection, supporting schools and educational programs, Building Improvement Fund etc).
- I give to the NERAM Foundation the residue of my estate. The receipt issued in the name of NERAM Foundation is an absolute discharge to my executors.
- Deed of Gift – The Donor, unconditionally and irrevocably, assigns to the New England Regional Art Museum Limited under the Cultural Gifts Program pursuant to Subdivision 30-A of the Income Tax Assessment Act 1997, all of the Donor's title and interest in (*specify the artwork/property or refer to property specified in a schedule attached to the Deed*) on a date to be determined by the Donor or upon the Donor being deceased, whichever is the earlier.



Adopt-an-Artwork donor presentation 2017



NERAM Volunteer Program excursion 2017

Acknowledgments

NERAM acknowledges all donations through our Honour Board, in our Annual Report and through special functions for donors and supporters.

- For large scale donations and gifts there are opportunities for naming rights to gallery spaces within the building and naming rights for programs, staff positions, acquisitions or fellowships that are supported through a specific gift made as a Living Will, Deed of Gift, through a cash donation or from a trust.
- Some donors wish to remain anonymous and we are happy to acknowledge their preferences.

Please discuss how you would like to be acknowledged with the NERAM Art Museum Director while planning your gift in order to ensure that your wishes are able to be carried out.

Examples of major gifts to NERAM:

• The Chandler Coventry Collection

Chandler Coventry (1924-1999) was born into an established grazing family in the New England district. In the 1960s he moved to Sydney where he established a commercial art gallery and became an avid collector and supporter of contemporary Australian and international artists. He was a regular donor to the Armidale City Collection and later donated the bulk of his collection to NERAM after it was founded in 1983.

• The John Gale Donation

John Gale OBE (1924-2016) was a Canberra based land-owner and arts benefactor (the National Trust and Opera Australia). The John Gale Donation of eleven artworks to the NERAM collection in 2016 through the Cultural Gifts Program includes paintings by Arthur Streeton, Elioth Gruner, Septimus Power, Herbert Badham and Hans Heysen.

• The Helen Dangar Memorial Art Bursary

Helen Dangar (1944-2015) was an accomplished academic and teacher in Armidale who was passionate about the arts and NERAM, where she worked as a volunteer and fundraiser. The Helen Dangar Memorial Art Bursary has been established with funds donated by the Dangar family, their friends and NERAM supporters with the aim of celebrating her life by assisting local artists in the New England region to improve their skills and arts practice.



Nigel Thomson, *Portrait of Chandler Coventry AM*, 1983

THE CIRCLE

The Howard Hinton Circle

The Howard Hinton Circle is a voluntary membership of people who have notified us of their intention to make a bequest to NERAM and who share an interest in supporting the art museum and the community it serves. The members will be celebrating the important role that NERAM has played in their lives.

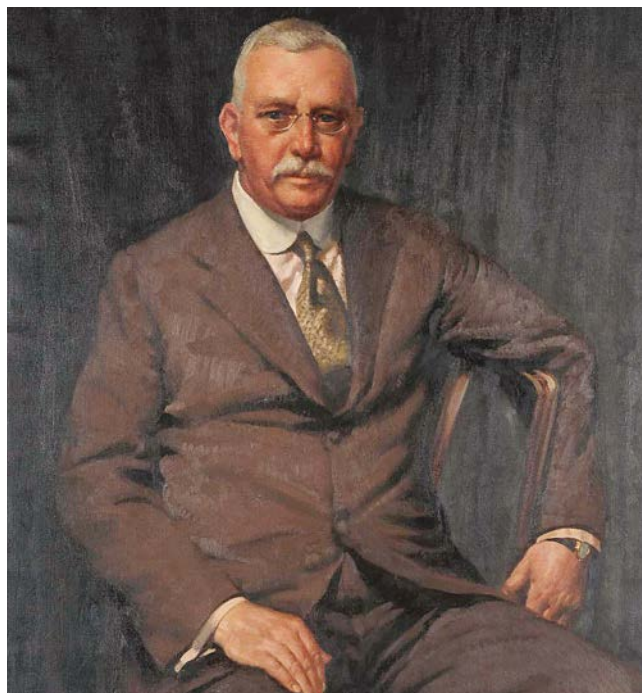
Named in recognition of our most significant benefactor Howard Hinton OBE (1867-1948) who donated over 1000 artworks to the Armidale Teachers College that now form the basis of the collections at NERAM.

Members of the Howard Hinton Circle will be invited to participate in special joint activities throughout the year to acknowledge their contributions to NERAM.

Leave a legacy to NERAM

To discuss your plans for a gift or donation please contact:

Robert Heather
Art Museum Director
Tel: 02 6772 5255
Email: director@neram.com.au



Norman Carter, *Portrait of Howard Hinton Esq, OBE* 1936 Gift of the staff and students of the 1935-36 Session 1937, Armidale Teachers College Collection

Cover image: Mary Edwards, *The Orchid* 1935
Gift of Howard Hinton 1935