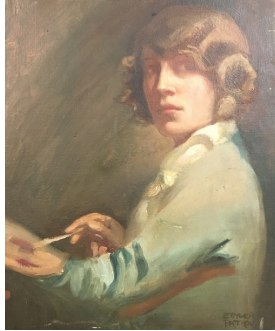


## FEMALE ARTISTS IN THE HINTON COLLECTION



Research one of the below female Hinton Collection artists.

**Nora Heysen (1911-2003)**

**Ethel Spowers (1890-1947)**

**Margaret Preston (1875-1963)**

**Ester Paterson (1892-1971)**

### GUIDING QUESTIONS

What were the subjects and themes in their work? Why do you think they chose these subjects?

---

---

---

---

Choose a work by the artist. If the image is a landscape or has figures in it, describe what is happening in the work. From the visual information in the image, imagine a story about what is happening.

---

---

---

---

---

Traditional roles for women often centred on family and the home. How and why were traditional roles for women changing in the early decades of the twentieth century (1900's)? Outside of painting in the studio, what roles did these female artists take up in their lives?

---

---

---

---

---

How do you think society felt about women working as artists?

---

---

---

Female artists' work was (and still is) often sold at a lower price than male artists. What could be the reasons for this?

---

---

Try drawing one of the works of your chosen artist.



Image credits:

Margaret Preston, *Australian Flowers*, 1932, oil on canvas, Gift of Howard Hinton Collection 1935, The Howard Hinton Collection

Ethel Spowers, *The Timber Crane*, 1926, colour linocut, Gift of Howard Hinton 1936, The Howard Hinton Collection

Esther Paterson, *Self portrait*, 1935, oil on canvas, Acquisition supported with funds from the Visual Arts Board 1988, NERAM Collection

Nora Heysen, *Still Life*, 1933, oil on canvas, Gift of Howard Hinton 1933, The Howard Hinton Collection

Margaret Preston, *A Darwin Bunch*, 1940, oil on canvas, Gift of Howard Hinton Collection 1943, The Howard Hinton Collection